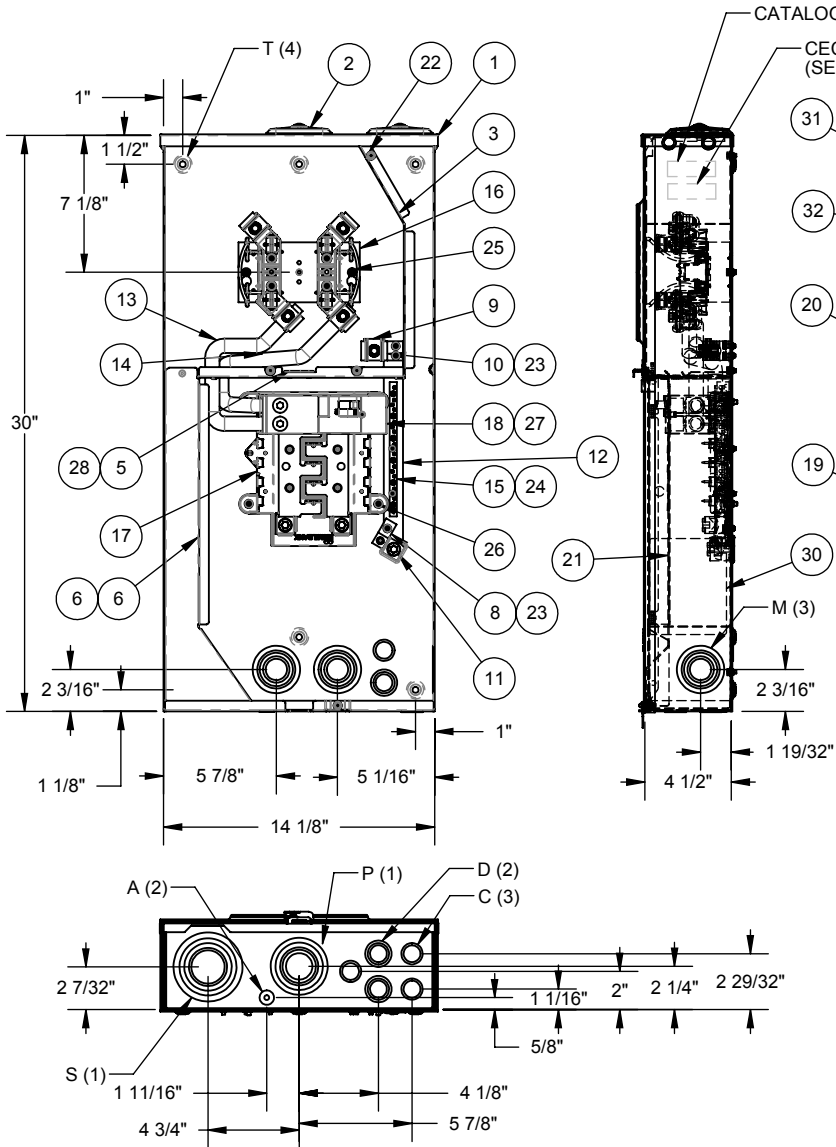


KO CONFIGURATIONS	
A	1/4, 1/2 CONC.
C	1/2, 3/4 CONC.
D	1/2, 3/4, 1 CONC.
M	3/4, 1, 1 1/4, 1 1/2, 2 CONC.
P	1, 1 1/4, 1 1/2, 2, 2 1/2 CONC.
S	1 1/4, 1 1/2, 2, 2 1/2, 3 CONC.
T	U/L MOUNTING EMBOSS

SEE SHEET 2 FOR ALL CHARTS



NOTES:

- 1.) PACKED INSIDE.
- 2.) FOR FIELD INSTALLED 5TH TERMINAL ASS'Y ORDER CATALOG #K5T. FOR FACTORY INSTALLED SEE DRAWING #5168-31.
- 3.) WHEN SOLD W/ "R" PREFIX, UNIT TO BE SINGLE PACKED IN CARTON #1124902. MDC TO APPLY CARTON LABEL FROM LIST BELOW TO MIDDLE OF CARTON SIDE PANEL:
 R5168-XTL-200: #1130599
 R5168-XTL-200-KK: #1130600
 R5168-XTL-200-KK-5T: #1137279
 R5168-XTL-200-KK-PL: #1158955
- 4.) WHEN SOLD WITH -CECHA SUFFIX, STAMP "CECHA APPROVED" PER DRAWING #1162824 USING INDELIBLE INK #1162818.

ITEM	QTY.	PART NUMBER	DESCRIPTION
1	1	1122711	SHELL WELDMENT
	1	1122695	BACK
	1	1122718	TOP
	1	1124648	BOTTOM
2	2	1002830	CLOSING PLATE ASSY. (SEE NOTE 1)
3	1	1122702	WIREWAY, UPPER
4	1	1124354	CENTER BARRIER
5	1	1026494	LATCH
6	2	(SEE CHART)	WIREWAY COVER
7	S/C	1000085	ANGLE
8	1	1126892	CONNECTOR 2/0-14
9	1	1000414	350 KCMIL INT. HEX
10	1	1000364	CONNECTOR, 350 kcmil G/S
11	1	1002790	350-6 kcmil SLIP-ON LUG
12	1	1122709	NEUTRAL BUS
13	1	1124344	WIRE-CO 3/0 11-3/4" BLK THHN
14	1	1124345	WIRE 3/0 13.50 BLK THHN
15	1	1025343	NEUTRAL CONNECTOR
16	1	(SEE CHART)	BLOCK & BRIDGE ASS'Y
17	1	1122660	INTERIOR ASS'Y
18	1	(SEE CHART)	CIRCUIT BREAKER
19	1	1122710	LOWER FRONT ASS'Y
20	1	(SEE CHART)	FRONT ASSY, METER
21	1	1122705	DEAD FRONT
22	5	1001290	SCREW, 10-32 X 5/16
23	3	1001311	SCREW, SHW-SC #10-32 x 1/2 ST
24	2	1123003	SCREW 10-32 x 1
25	2	1000183	SCREW 12-24 x 5/16
26	4	1008132	SCW 12-24 X .500 ST
27	1	1135946	SCREW, 6-32 X 2.5 XP-SC
28	S/C	1000047	RIVET (SEE NOTE)
29	1	1025112	LABEL SERVICE DISCONNECT
30	1	(SEE CHART)	RATING LABEL
31	1	1000064	LABEL, WARNING
32	1	1000158	WIREMAN PAD
33	1	1025123	LATCH PAD (1-PER)
34	1	1124902	CARTON (NOT SHOWN)

Material:	16 GA. STEEL	<p>General Offices: Kansas City, MO</p>	
Shear/ Die#:			
Finish:	MILBANK LIGHT GRAY		
Part Wt.:			
Tolerances: Unless Specified Otherwise X.X ±.1 X.XX ±.03 X.XXX ±.015 X* ±2*		Title: 200 AMP RINGLESS 4T 350 kcmil SIDE WIREWAY OH/JG METER MAIN 22 kA Short Circuit Current Rating Catalog No.: R or U5168-XTL-(amp) Customer: Drawing No.: 5168	
Scale:	NTS	Checked By:	
Drawn By:	JRS	Approved By:	
Date:	2-3-04	Sheet	1 of 2

REV.	DATE	DESCRIPTION	BY
L4	7/19/13	MOVED RATING LABEL TO RIGHT SIDE OF BACK. (ECO #24232)	BL

(amp)	CIRCUIT BREAKER	RATING LABEL
200	1119072	1124259
150	1120763	1127359

SUFFIX	B & B ASSY
NONE	1127156
-KK	1126993

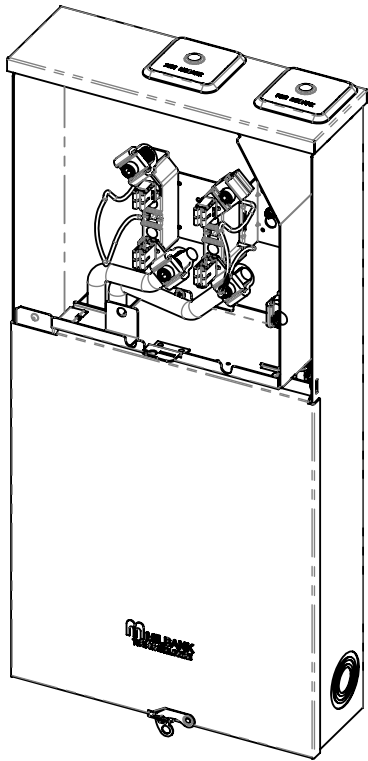
SUFFIX	WIREWAY COVER
NONE	1122701
-RWW	1155791

SUFFIX	FRONT ASS'Y
NONE	1124651
-IL	1129686
-BL	1124651
-BLG	1124651
-PL	1129715

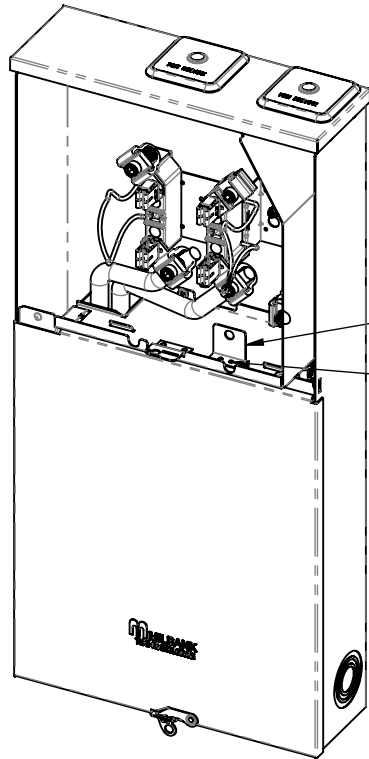
SUFFIX	LOWER WIREWAY
NONE	1122698
-HUNT	1158456

WHEN THE FOLLOWING CATALOG NUMBERS ARE SOLD REPLACE THE CATALOG STAMP ON THE OUTSIDE OF BOX WITH THE LISTED LABEL:

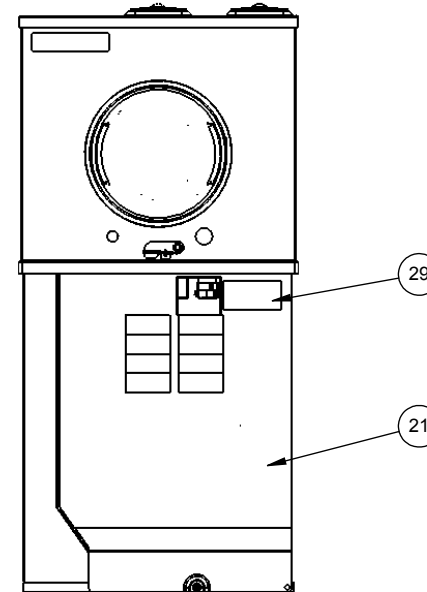
CATALOG NUMBER	LABEL #
U5168-XTL-150-ALT	1138424
U5168-XTL-200-ALT	1138425
U5168-XTL-150-KK-ALT	1132058
U5168-XTL-200-KK-ALT	1132059



-BL CONFIGURATION



-BLG CONFIGURATION



SUFFIX	ANGLE 1000085 QTY.	RIVET 1000047 QTY.
NONE	0	2
-BL	1	4
-BLG	1	4

Material:	16 GA. STEEL	
Shear/ Die#:		
Finish:	MILBANK LIGHT GRAY	
Part Wt.:		
Tolerances:	Third Angle	
Unless Specified Otherwise		
X.X	±.1	
X.XX	±.03	
X.XXX	±.015	
X*	±2*	
Scale:	NTS	Checked By:
Drawn By:	JRS	Approved By:



Title:	200 AMP RINGLESS 4T 350 kcmil SIDE WIREWAY OH/JUG METER MAIN 22 kA Short Circuit Current Rating	
Catalog No.:	U5168-XTL-(amp)	
Customer:		
Drawing No.:	5168	
Date:	2-3-04	Sheet 2 of 2

REV.	DATE	DESCRIPTION	BY
L4	7/19/13	MOVED RATING LABEL TO RIGHT SIDE OF BACK. (ECO #24232)	BL